

iPhone/iPad Connection Manual

By connecting your iPhone, iPad or iPod touch to a compatible Yamaha digital instrument and using the various applications we've created, you can manage your music files more easily and take advantage various functions — expanding the potential of the instrument and make it an even more integral part of your total music life.

NOTE In this manual, iPhone and iPod touch are hereafter collectively called iPhone.

Yamaha Applications for Piano & Keyboard Instruments

Refer to the following web page for information on Yamaha applications for pianos and keyboard instruments.

<http://www.yamaha.com/kbdapps/>

iPhone/iPad compatibility and other related system requirements vary from application to application. Be sure, therefore, to refer to the compatibility-related information provided on the above web page.

Certain applications do not need to be connected to an instrument. In such a case, there is no need to follow the instructions provided in this manual.

■ Download the applications

You can download the applications from the App Store, accessible by clicking or tapping the App Store icon in each application's page of the website above.

Contents

Yamaha Applications for Piano & Keyboard Instruments	1
NOTICE	3
Information	3
Which Terminal Should I Use?	4
Connection	6
Glossary of Terms	13
About Using BSD-Licensed Software	14

NOTICE

To prevent the iPhone/iPad from falling, note the following points:

- Before moving the instrument, make sure to remove the iPhone/iPad from the music rest.
- Never put anything else on the music rest together with the iPhone/iPad, such as a song booklet or another iPhone/iPad. Doing so may make the music rest unstable.
- Never place the instrument with the iPhone/iPad in an unstable position.
- Never slide the iPhone/iPad along the music rest or submit it to strong shock, such as pushing or hitting it when on the music rest.
- After use, or when you separate from a instrument, make sure to remove the iPhone/iPad from the music rest.

To avoid noise caused by communication, note the following points:

When using your instrument together with an App on your iPhone/iPad, we recommend that you turn on Airplane Mode on your device. If you need to connect to a Wi-Fi network at this time, we recommend that after turning on Airplane Mode, you also turn on Wi-Fi.

Information

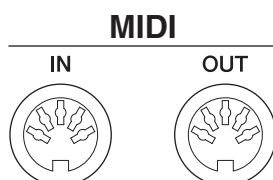
- The contents of this manual are exclusive copyrights of Yamaha Corporation.
- Copying of the reproduction of this manual in whole or in part by any means is expressly forbidden without the written consent of the manufacturer.
- Yamaha makes no representations or warranties with regard to the use of the documentation and cannot be held responsible for the results of the use of this manual.
- The screen displays as illustrated (are based on the CVP-609) in this manual are for instructional purposes, and may appear somewhat different from the screens which appear on your instrument or device.
- Copying of the commercially available musical data including but not limited to MIDI data and/or audio data is strictly prohibited except for your personal use.
- iPhone, iPad, iPod touch and Lightning are trademarks of Apple Inc., registered in the U.S. and other countries.
- The company names and product names in this manual are the trademarks or registered trademarks of their respective companies.

Which Terminal Should I Use?

You can connect your iPhone/iPad to instruments equipped with MIDI terminals or a [USB TO HOST] terminal, or to instruments which include a USB Wireless LAN Adaptor. Since the connection procedures differ depending on the terminal, confirm which terminal your instrument is equipped with and whether or not a USB Wireless LAN Adaptor is included.

NOTE Audio signals cannot be transferred between the digital instrument and the iPhone/iPad. This means that audio signals created via your keyboard performance cannot be recorded to the connected iPad/iPhone.

■ When equipped with MIDI terminals: page 6



Required devices

- Yamaha MIDI interface i-MX1
- (When using a device with a Lightning connector, such as iPhone 5, etc.) Apple Lightning to 30-pin Adapter

■ When equipped with a [USB TO HOST] terminal: page 7



Required devices

- Yamaha USB MIDI interface i-UX1
- (When using a device with a Lightning connector, such as iPhone 5, etc.) Apple Lightning to 30-pin Adapter

■ For instruments compatible with the USB Wireless LAN Adaptor UD-WL01: page 8

NOTE For more information on compatibility with your Yamaha product, refer to the relevant Owner's Manual or the Reference Manual.

NOTE You need to make sure that the applications you want to use support wireless LAN connection. Check the information in the website described on [page 1](#).

Required devices

- USB Wireless LAN Adaptor UD-WL01
- Access point with router (This is unnecessary if your modem has router capability.)

■ When a USB Wireless LAN Adaptor is included with your instrument: [page 8](#)

NOTE A USB Wireless LAN Adaptor may not be included depending on your locale, even if your instrument can be connected to an iPhone/iPad.

Make sure to use the included USB Wireless LAN Adaptor. Other USB Wireless LAN Adaptors are not compatible with the instrument.

NOTE Please note that you cannot connect your instrument to your iPhone/iPad using Wireless LAN connection unless the USB Wireless LAN Adaptor is included, even if your instrument features the Internet Direct Connection (IDC) function using the Wireless LAN connection. (Cable connection is available with MIDI terminals or [USB TO HOST] terminal.)

NOTE You need to make sure that the applications you want to use support wireless LAN connection. Check the information in the website described on [page 1](#).

Required devices

- USB Wireless LAN Adaptor included with your instrument
- Access point with router (This is unnecessary if your modem has router capability.)

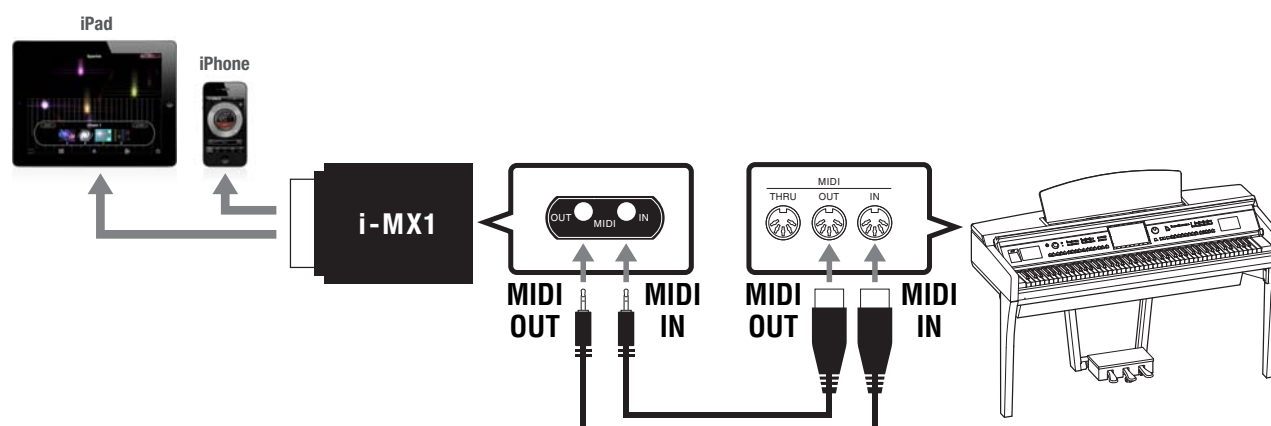
Connection

■ Connecting to the MIDI terminals

Connect your iPhone/iPad to the MIDI terminals of the instrument via i-MX1.

Required devices

- Yamaha MIDI interface i-MX1
- (When using a device with a Lightning connector, such as iPhone 5, etc.) Apple Lightning to 30-pin Adapter



1 Turn off the power of the instrument.

Quit any open application software on your iPhone/iPad.

2 Connect the two cables included in the i-MX1 to the MIDI IN and MIDI OUT terminals of the i-MX1.

3 Connect the opposite side of the cables to the MIDI OUT and MIDI IN terminals of the instrument.

Please make sure that i-MX1 MIDI OUT terminal is connected to the MIDI IN terminal of the instrument, and the i-MX1 MIDI IN terminal to the MIDI OUT terminal of the instrument.

4 Connect i-MX1 to the iPhone/iPad.

When using a device with a Lightning connector, such as iPhone 5, etc., connect the i-MX1 to the iPhone/iPad via the Apple Lightning to 30-pin Adapter.

5 Turn on the instrument.

6 The connection procedures are completed at step 5. Use the application on your iPhone/iPad to communicate with your instrument.

NOTE Some applications need the appropriate setting to communicate with the instrument. For details, refer to the relevant application manuals.

Operation with iOS 6 or later

Note that iPhone and iPad devices running iOS 6 or later may, on rare occasions, fail to recognize the i-MX1.

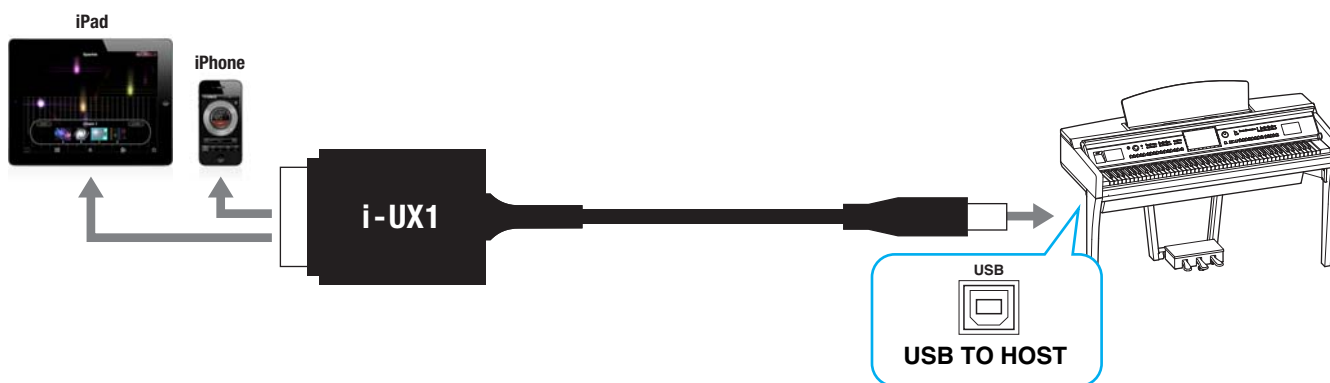
If this should occur, update the firmware of the i-MX1 to a new version according to the instructions in the attached PDF in the Yamaha website i-MX1 product page.

■ Connecting to the [USB TO HOST] terminal

Connect your iPhone/iPad to the [USB TO HOST] terminal of the instrument via i-UX1.

Required devices

- Yamaha USB MIDI interface i-UX1
- (When using a device with a Lightning connector, such as iPhone 5, etc.) Apple Lightning to 30-pin Adapter



- 1 Turn off the power to the instrument.**
Quit any open application software on your iPhone/iPad.
- 2 Connect the opposite side of the cable to the [USB TO HOST] terminal of the instrument.**
- 3 Connect i-UX1 to the iPhone/iPad.**
When using a device with a Lightning connector, such as iPhone 5, etc., connect the i-UX1 to the iPhone/iPad via the Apple Lightning to 30-pin Adapter.
- 4 Turn on the power to the instrument.**
- 5 The connection procedures are completed at step 4. Use the application on your iPhone/iPad to communicate with your instrument.**

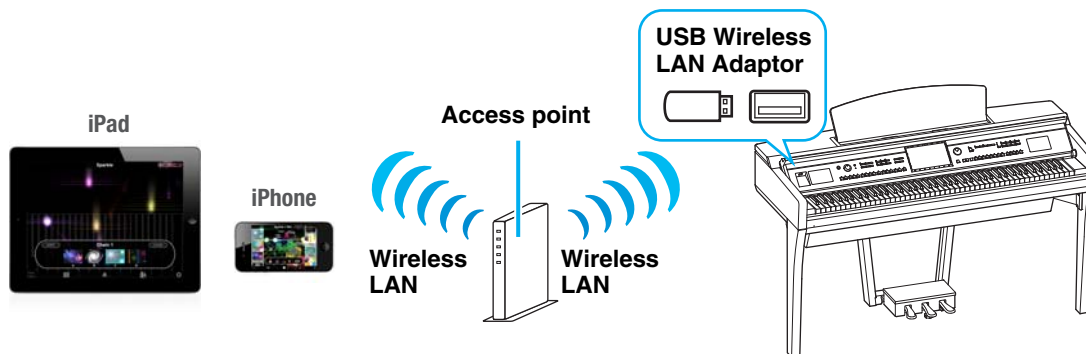
NOTE Some applications need the appropriate setting to communicate with the instrument. For details, refer to the relevant application manuals.

■ Connecting with the included accessory USB Wireless LAN Adaptor or UD-WL01

Connect your iPhone/iPad with the included accessory “USB Wireless LAN Adaptor” or the UD-WL01 via an access point such as a router.

Required devices

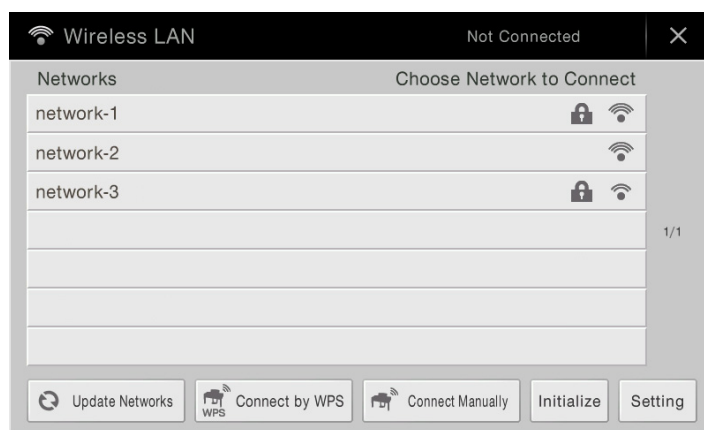
- USB Wireless LAN Adaptor included with your instrument or the optionally available UD-WL01
- Access point with router (This is unnecessary if your modem has router capability.)



- 1 Turn off the power to the instrument.**
Quit any open application software on your iPhone/iPad.
- 2 Connect the USB Wireless LAN Adaptor to the [USB TO DEVICE] terminal of the instrument.**
- 3 Turn on the power to the instrument.**
- 4 Display the Networks in the wireless LAN display of the instrument.**

NOTE For more information on displaying networks in the wireless LAN display of the instrument, refer to the Owner's Manual or the Reference Manual of your instrument.

For example, on the CVP-609/605: Menu → [Wireless LAN]



NOTE If no signal from the access point is received, the access point cannot be listed. Also, closed access points cannot be listed.

- 5 Connect the instrument to the access point.**

From the Networks listed on the display, select the desired one. For a network with a lock icon (🔒), you need to enter the password, and for the network without the lock icon, you can connect the network only by selecting it. When connection is done successfully, “Connected” is shown at the top of the display, and the icon shown below appears according to the signal strength.



The connection between the instrument and the access point is complete. Proceed to step 6 on [page 12](#) to connect the access point and iPhone/iPad. If you cannot find the desired network on the display or you want to set by a method other than described above, see the operations on [pages 9 – 11](#).

NOTE The name of the function described above may differ or the function may not be supported depending on the instrument.

Automatic Setup by WPS (CVP-609/605)

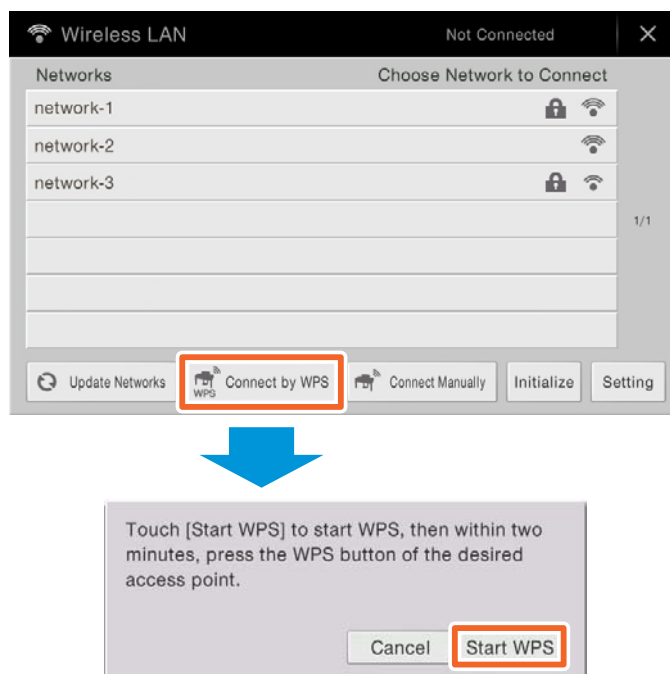
If your access point supports WPS, you can easily connect the instrument to access point by WPS, without making settings, such as key input, etc.

NOTE Check whether your access point supports WPS by referring to the owner's manual for the access point you are using.

NOTE The following procedure is for CVP-609. The button name and displayed name differ depending on the instrument.

1 As illustrated, press the [Start WPS] button via the display of the instrument.

For example, on the CVP-609/605



2 Press the WPS button on your access point within two minutes after step 1 above.

NOTE For details about the operations in the setting of the access point, read the owner's manual for the product you are using.

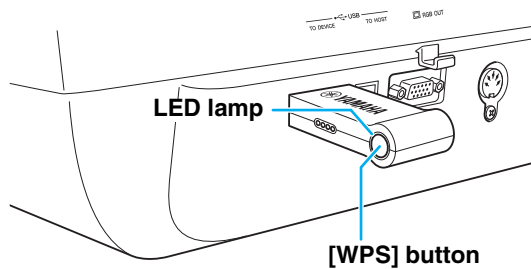
The necessary information is automatically set, and the connection between access point and the instrument has been completed. Proceed to step 6 on [page 12](#) to connect the access point and iPhone/iPad.

Automatic Setup by WPS (When using the UD-WL01 USB Wireless LAN Adaptor)

If your access point supports WPS, you can easily connect the instrument to access point by WPS, without making settings, such as key input, etc.

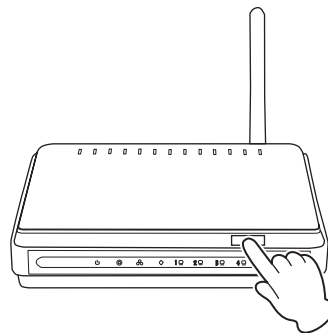
NOTE Check whether your access point supports WPS by referring to the owner's manual for the access point you are using.

- 1 As illustrated, press and hold the [WPS] button via the display of the instrument for longer than three seconds.**



The LED lamp of the adaptor flashes every 1/2 second.

- 2 Press the WPS button on your access point within two minutes after step 1 above.**



Press the WPS button on your access point.

When the connection to the wireless network is completed, the LED lamp of the adaptor lights, and then flashes during communication over the network.

NOTE For details about the operations in the setting of the access point, read the owner's manual for the product you are using.

The necessary information is automatically set, and the connection between access point and the instrument has been completed. Proceed to step 6 on [page 12](#) to connect the access point and iPhone/iPad.

Manual Setup

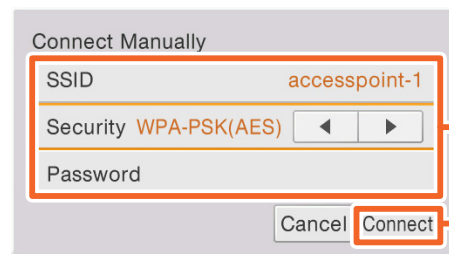
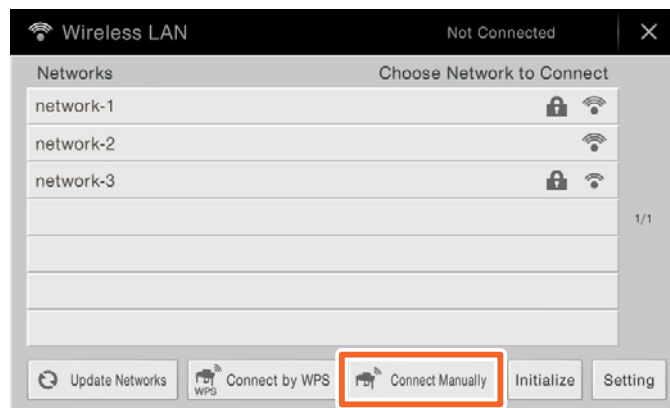
If you cannot find the desired network on the display, it may be a network with closed or non-disclosure. In this case, you will need to manually input SSID, security and key settings for connection.

NOTE Check whether your access point supports WPS by referring to the owner's manual for the access point you are using.

NOTE The following procedure is for CVP-609. The button name and displayed names differ depending on the instruments.
For more information on successively inputting the SSID, Security and Password on the display of the instrument (other than the CVP-609), refer to the Owner's Manual or the Reference Manual of your instrument.

- 1 **As illustrated, input in succession the SSID, Security and Password on the display of the instrument.**

For example: CVP-609/605



Please set these to the same as the settings on the access point.

2

- 2 **Press the [Connect] button as illustrated.**

Connecting by the Access Point Mode

When the available access point cannot be found, you can use your instrument as an access point and connect it to the iPhone/iPad directly (via peer-to-peer Wireless LAN).

Determine the settings below referring the Owner's Manual of your instrument.

- 1 **Select the Access Point Mode.**
- 2 **If necessary, make the SSID, Security, Password, and Channel settings.**
- 3 **Save the settings.**

Now your instrument is available as an access point.

NOTE When the connection is made by using the Access Point Mode, your instrument will not be able to connect with the Internet using wireless LAN.

NOTE Only the instrument which has the Access Point Mode function can become an access point.

6 Connect the iPhone/iPad to the access point.

- 6-1 Call up the Wi-Fi display on your iPhone/iPad by tapping Settings → Wi-Fi.
- 6-2 Turn ON the Wi-Fi.
- 6-3 Tap the same Network selected in step 5 from the Network list. If the key is required, input the key, then connect.

7 The connection procedures are completed at step 6. Use the application on your iPhone/iPad to communicate with your instrument.

NOTE Some applications need the appropriate setting to communicate with the instrument. For details, refer to the relevant application manuals.

Glossary of Terms

Access point	A device which acts as a base station when transmitting data by wireless LAN. Some access points are combined with modem functions.
Broadband	An Internet connection technology/service (such as ADSL and optical fiber) that allows for high-speed, high-volume data communication.
Internet	A huge network made up of networks, the Internet allows high-speed data transfer among computers, mobile phones and other devices.
LAN	Short for Local Area Network, this is a data-transfer network that connects a group of computers at a single location (such as an office or home) by means of a special cable.
Link	Location information in other sentences and images, etc. that are under buttons and character strings on a web page. When the place with the link is clicked, the page selection jumps to the relevant link.
Modem	A device which connects and allows data transfer between a conventional telephone line and a computer. It converts the digital signals from the computer to analog audio for sending over the phone line, and vice versa.
Provider	A communications business that offers Internet connection services. In order to connect to the Internet, it is necessary to contract to a provider.
Router	A device that allows multiple devices (e.g., computers, your Yamaha instrument) to share the same Internet connection.
Security setting of access point	Protects data passed from various access points from being intercepted from an unauthorized person/device.
Server	A hardware system or computer used as a central point for a network, providing access to files and services.
Site	Short for "website," this refers to the group of web pages that are opened together. For example, the collection of web pages whose addresses begin with " http://www.yamaha.com/ " is referred to as the Yamaha site.
SSID	A name used to identify a particular access point, or the wireless networks set as the access point.
USB Wireless LAN Adaptor	A device which allows wireless LAN connection.
WEP	A standard of security format of wireless LAN.
Wireless LAN	A LAN connection that allows data transfer through a wireless, cable-free connection.
Wireless network	Wireless network where signal is sent and received by using electric waves.
WPA/WPA2	A standard of security format of wireless LAN. It is more secure than the WEP format adopted in the past.
WPS	A structure to easily make a setting of wireless LAN by pushing only the WPS buttons of an access point and the wireless LAN device.

(CVP-609/605 only)

About Using BSD-Licensed Software

The software used by this product includes components that comply with the BSD license.

The restrictions placed on users of software released under a typical BSD license are that if they redistribute such software in any form, with or without modification, they must include in the redistribution (1) a disclaimer of liability, (2) the original copyright notice and (3) a list of licensing provisions.

The following contents are displayed based on the licensing conditions described above, and do not govern your use of the product.

WPA Supplicant

Copyright © 2003-2009, Jouni Malinen <j@w1.fi> and contributors
All Rights Reserved.

This program is dual-licensed under both the GPL version 2 and BSD license. Either license may be used at your option.

License

Redistribution and use in source and binary forms, with or without modification, are permitted provided that the following conditions are met:

1. Redistributions of source code must retain the above copyright notice, this list of conditions and the following disclaimer.
2. Redistributions in binary form must reproduce the above copyright notice, this list of conditions and the following disclaimer in the documentation and/or other materials provided with the distribution.
3. Neither the name(s) of the above-listed copyright holder(s) nor the names of its contributors may be used to endorse or promote products derived from this software without specific prior written permission.

THIS SOFTWARE IS PROVIDED BY THE COPYRIGHT HOLDERS AND CONTRIBUTORS "AS IS" AND ANY EXPRESS OR IMPLIED WARRANTIES, INCLUDING, BUT NOT LIMITED TO, THE IMPLIED WARRANTIES OF MERCHANTABILITY AND FITNESS FOR A PARTICULAR PURPOSE ARE DISCLAIMED. IN NO EVENT SHALL THE COPYRIGHT OWNER OR CONTRIBUTORS BE LIABLE FOR ANY DIRECT, INDIRECT, INCIDENTAL, SPECIAL, EXEMPLARY, OR CONSEQUENTIAL DAMAGES (INCLUDING, BUT NOT LIMITED TO, PROCUREMENT OF SUBSTITUTE GOODS OR SERVICES; LOSS OF USE, DATA, OR PROFITS; OR BUSINESS INTERRUPTION) HOWEVER CAUSED AND ON ANY THEORY OF LIABILITY, WHETHER IN CONTRACT, STRICT LIABILITY, OR TORT (INCLUDING NEGLIGENCE OR OTHERWISE) ARISING IN ANY WAY OUT OF THE USE OF THIS SOFTWARE, EVEN IF ADVISED OF THE POSSIBILITY OF SUCH DAMAGE.

XySSL

Copyright © 2006-2008, Christophe Devine.
All rights reserved.

Redistribution and use in source and binary forms, with or without modification, are permitted provided that the following conditions are met:

- * Redistributions of source code must retain the above copyright notice, this list of conditions and the following disclaimer.
- * Redistributions in binary form must reproduce the above copyright notice, this list of conditions and the following disclaimer in the documentation and/or other materials provided with the distribution.
- * Neither the name of XySSL nor the names of its contributors may be used to endorse or promote products derived from this software without specific prior written permission.

THIS SOFTWARE IS PROVIDED BY THE COPYRIGHT HOLDERS AND CONTRIBUTORS "AS IS" AND ANY EXPRESS OR IMPLIED WARRANTIES, INCLUDING, BUT NOT LIMITED TO, THE IMPLIED WARRANTIES OF MERCHANTABILITY AND FITNESS FOR A PARTICULAR PURPOSE ARE DISCLAIMED. IN NO EVENT SHALL THE COPYRIGHT OWNER OR CONTRIBUTORS BE LIABLE FOR ANY DIRECT, INDIRECT, INCIDENTAL, SPECIAL, EXEMPLARY, OR CONSEQUENTIAL DAMAGES (INCLUDING, BUT NOT LIMITED TO, PROCUREMENT OF SUBSTITUTE GOODS OR SERVICES; LOSS OF USE, DATA, OR PROFITS; OR BUSINESS INTERRUPTION) HOWEVER CAUSED AND ON ANY THEORY OF LIABILITY, WHETHER IN CONTRACT, STRICT LIABILITY, OR TORT (INCLUDING NEGLIGENCE OR OTHERWISE) ARISING IN ANY WAY OUT OF THE USE OF THIS SOFTWARE, EVEN IF ADVISED OF THE POSSIBILITY OF SUCH DAMAGE.